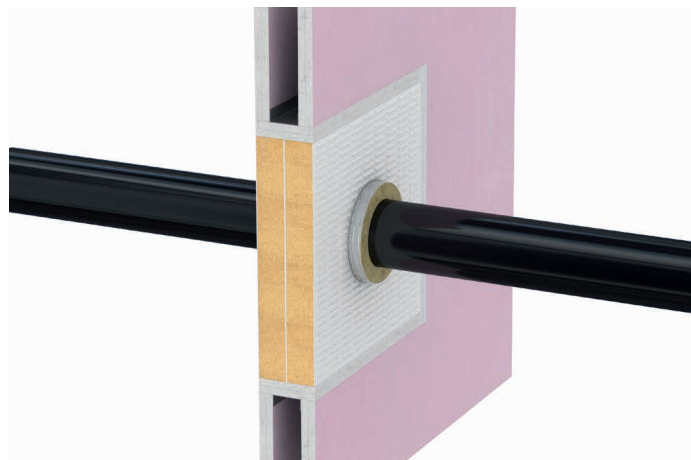


QIF INSULATED FIRE SLEEVE INSTALLATION INSTRUCTIONS

This installation guide is intended for general information only and all details should be checked against relevant supporting test evidence and certification.



Quelfire QIF Insulated Fire Sleeves are lifesaving products designed to prevent the spread of fire where pipes penetrate fire compartment floors and walls. It is therefore essential that they are fitted in a responsible and workmanlike manner. QIF Insulated Fire Sleeve are suitable for use in concrete floors and various wall constructions including solid concrete masonry/ block walls and flexible fire rated plasterboard partitions with and without QuelStop Fire Batt. Fire ratings depend on the substrate and services so refer to the technical data and installation details for full details.

QIF are primarily made from a mineral wool material so they will provide a degree of thermal insulation and thermal movement to the pipe as it passes through the fire compartment so no extra sleeves are required. Other pipe insulations can then be jointed onto the ends of the QIF once installed.

The QIF is 25mm thick so holes should be cut or drilled at 50mm bigger than the (ID) Internal Diameter (ID) of the sleeve, refer to the table below for full details:

Quelfire Product Code	(ID) Inside diameter	To suit pipes with (OD) Outside Diameters	Approx. thickness of QIF	Recommended hole diameter
QIF17	17mm	15 to 19mm	25mm	67mm
QIF21	21mm	19 to 23mm	25mm	71mm
QIF27	27mm	25 to 29mm	25mm	77mm
QIF34	34mm	32 to 36mm	25mm	84mm
QIF42	42mm	40 to 44mm	25mm	92mm
QIF48	48mm	46 to 50mm	25mm	98mm
QIF54	54mm	52 to 56mm	25mm	104mm
QIF60	60mm	58 to 62mm	25mm	110mm
QIF67	67mm	65 to 69mm	25mm	117mm
QIF76	76mm	74 to 78mm	25mm	126mm
QIF80	80mm	78 to 82mm	25mm	130mm
QIF89	89mm	87 to 91mm	25mm	139mm
QIF102	102mm	100 to 104mm	25mm	152mm
QIF108	108mm	106 to 110mm	25mm	158mm
QIF114	114mm	112 to 116mm	25mm	164mm
QIF127	127mm	125 to 129mm	25mm	177mm
QIF140	140mm	138 to 142mm	25mm	190mm
QIF159	159mm	157 to 161mm	25mm	209mm

Installation principles of the Quelfire QIF Insulated Fire Sleeve

Whilst the QIF can be installed in different scenarios some basic installation principles apply.

- 1.** Once the correct diameter hole has been achieved and the correct QIF Insulated Fire Sleeve has been identified, check the pipe and penetration are clean of debris and there are no obstructions or sharp edges.



- 2.** Check the required length of the sleeve and where required cut to length with a sharp knife.



- 3.** Where the end of the pipe is accessible, the QIF can be simply slid onto the pipe. Alternatively, to retrofit the QIF, follow the following steps:

- 3.a** Cut one side of the QIF along its length with a sharp knife,



- 3.b** Open up the QIF and feed it around the pipe,



- 3.c** Wrap the QIF tight around the pipe, butting the cut ends up together again,



- 3.d** Seal with the self-adhesive foil tape supplied with the QIF.



QIF INSULATED FIRE SLEEVE INSTALLATION INSTRUCTIONS

- 4.** The QIF Insulated Fire Sleeve can then be slid along the pipe into the substrate.



- 5.** Ensure that the minimum protrusions are achieved – check both sides.



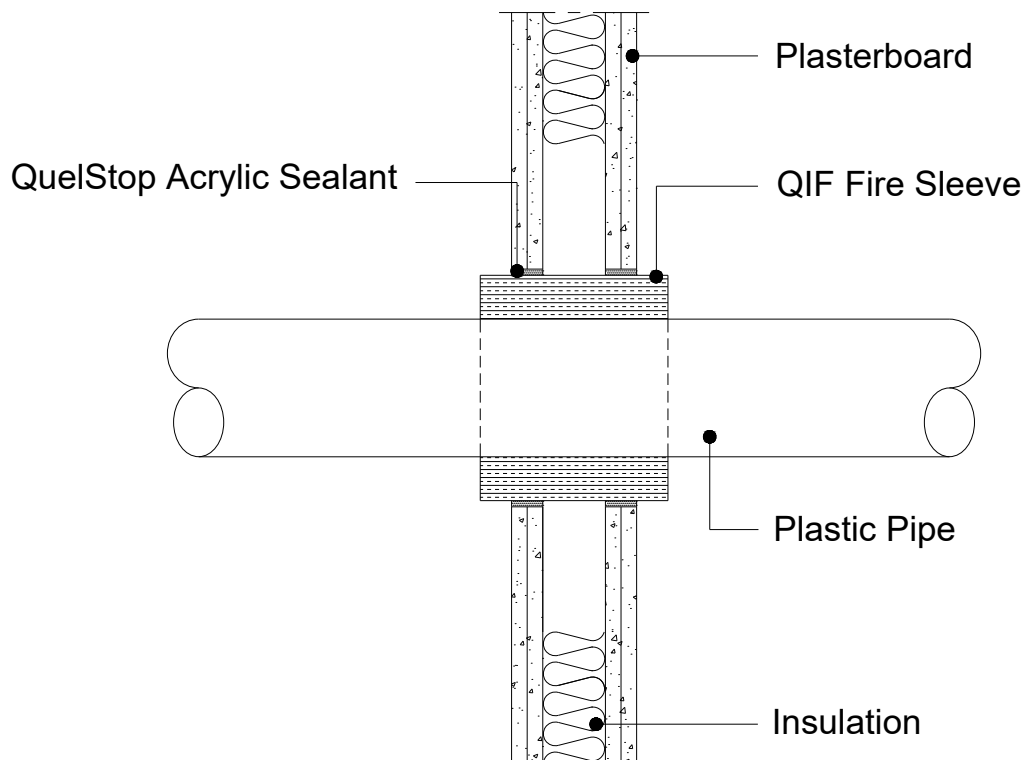
- 6.** Seal around the perimeter of the QIF where it meets the substrate with QuelStop Intumescent Acrylic Sealant.



- 7.** Where the pipes are required to be insulated, this can now be butted up to the QIF Insulated Fire Sleeve and sealed in accordance with manufacturer's recommendations.

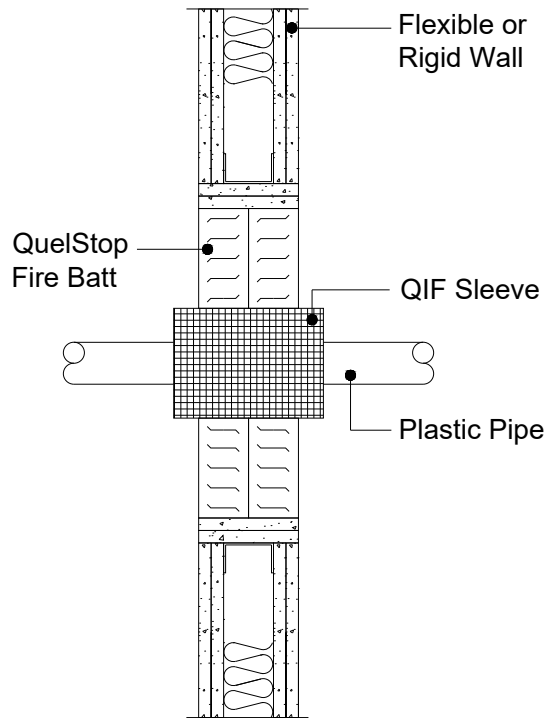
Example Installation 1 – Direct to flexible or rigid walls

Drill the hole in accordance with the details provided in the table above which is 50mm bigger than the (ID) Internal Diameter of the proposed QIF Insulated Fire Sleeve then install as described above ensuring the minimum required protrusion is achieved on both sides of the wall and finally seal both sides of the wall with QuelStop Intumescent Acrylic Sealant.



Example Installation 2 – In conjunction with QuelStop Fire Batt

In the case of oversized holes or formed letterboxes, depending on the services, it may be possible to use the QIF Insulated Fire Sleeve in conjunction with a double layer of QuelStop Fire Batt. In these cases the QIF should be installed first as described above however before finally positioning and sealing in place the double layer of QuelStop Fire Batt should be installed in accordance with separate supporting documentation.



Packaging & Storage:

Quelfire QIF Insulated Fire Sleeves are supplied individually to suit specific pipe diameters and may be packaged in cardboard boxes for shipping purposes and should be stored in a cool, dry location.

Health & Safety:

QIF Insulated Fire Sleeves consist of a mineral fibre mixed with polymers and a reactive graphite. No special measures are required other than we recommend wearing gloves and a dust mask to avoid irritation from any fibres that may be released especially during cutting.

For further information, please refer to the Material Safety Data Sheets, available on request or via the website.

Technical Support & Guidance:

Should you require any further information regarding this product, please do not hesitate to contact the technical department at Quelfire Ltd.

Tel: 0161 928 7308. Email: technical@quelfire.co.uk

Please be aware that this document is intended for general information only and all details should be checked against all relevant supporting test evidence, certification and installation guidelines. Use of alternative components or deviations from the instructions in any way is likely to mean that the installation will not comply with the assessed rating.

Quelfire Ltd does not accept responsibility for the consequences of using Quelfire products in applications or for purposes not authorised by Quelfire Ltd. Expert advice should be sought where such applications are contemplated.

The policy of Quelfire Ltd is one of constant improvement. Installers should therefore ensure they are working from the latest published drawings and instructions. Whilst Quelfire will endeavour to keep its publications up to date, the accuracy of the information contained within this drawing may be affected by pertinent changes in the law or regulatory requirements and alterations or amendments to the specification of Quelfire products.

All information contained in this document is given in good faith and is provided for guidance only. Any drawings provided are for illustrative purposes only. As Quelfire Ltd has no control over the methods or competence of installation and of prevailing site conditions, no warranties, expressed or implied, is intended to be given as to the actual performance of the product mentioned or referred to herein and no liability whatsoever will be accepted for any loss, damage or injury arising from the use of the information given.